



St. Joseph's Catholic School
and Sixth Form Centre



Sixth Form Prospectus

for September 2024 entry



I just want to thank you so much for all the support and educational excellence you have given to my daughter. You have truly got to know her as an individual over her time at the school and this has helped her fulfil her dreams! She is off to Cardiff this September and the world is her oyster! I'm a very grateful mum!

Parent of a former student (Summer 2023)



St. Joseph's Sixth Form

A Warm Welcome for All



Our Sixth Form provides a stimulating environment for purposeful academic and vocational study. St Joseph's is about so much more than coming in for lessons and going home again. We understand that there is no 'one-size-fits-all' path that students take after they leave us. We are simply here to support and

facilitate students as they work out which path is best for them.

Here at St. Joseph's we root everything in our mission to lead each young person in our school community to become "fully human in Christ". Our Catholic, Christian ethos demands the highest standards of expectation and commitment, recognising the distinct human dignity of every one of our students and doing all within our power to unlock their potential.

Students benefit from a full programme of advice and guidance for university application and for future careers. We pride ourselves on the pastoral care that we offer and we work proactively to

As Head of Sixth Form at St. Joseph's, I am immensely proud of the achievements of our students. Over many years, our Sixth Form has become well respected for both its commitment to the highest of academic standards, and for providing a cohesive and supportive community. Our students are role models for the rest of the school, and we are very proud of their academic and extra-curricular achievements.

Whether you are already at St. Joseph's and looking to build on your academic success so far, or joining us from a local school, you can be assured that you will receive a warm welcome in our Sixth Form, and all the support you need to gain the qualifications, confidence and life experience for the next step on your journey.

We believe in treating each person as an individual and arrange support and a curriculum to encourage

ensure that students achieve their full potential. The result is that students achieve well at St. Joseph's with high numbers every year achieving excellence and the vast majority going on to take up their first choice places at university.

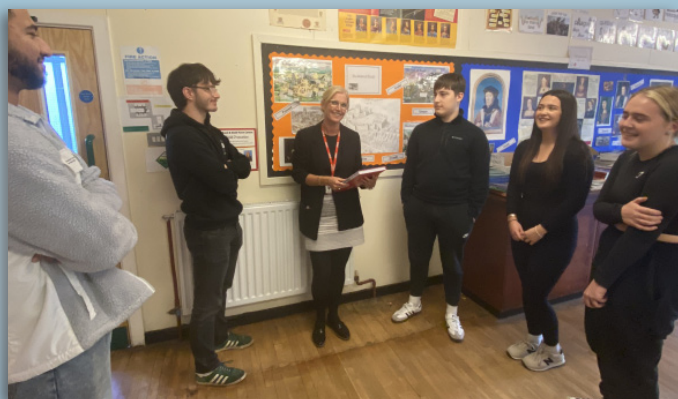
At St. Joseph's, we see our Sixth Formers as leaders of the school who work alongside the staff to ensure the smooth running of a friendly, informal but disciplined community. Most students have an area of responsibility as Prefects and will have a pastoral role as Peer Mentors, Eco-Champions, Ethos Ambassadors or Teacher Aids. We provide these opportunities so that our students can develop as well-rounded and conscientious leaders. In return we expect high standards in relation to behaviour, dress and attitude to work.

Our ethos demands a genuine effort from all so that all can maximise their potential. At St. Joseph's you will have many opportunities to develop talents in a range of cultural, sporting and musical opportunities. We emphasise enjoyment and excellence and encourage everyone to have a go! We look forward to welcoming you in September.

Dr John Felton
Headteacher

optimum achievement for every one of our students. If you have any questions about any of the information included please ask – we are happy to help.

Jodie Gow
Head of Sixth Form





Why St. Joseph's Sixth Form?

At St Joseph's, we can offer students a challenging, varied and rewarding Sixth Form experience. Our Sixth Form is a place where students can seize a wide range of opportunities to develop themselves academically, socially, morally and spiritually.

High quality and personalised teaching is at the core of our Sixth Form and this is evident in the excellent results that all our students achieve. We prepare our students for the next stage of their lives, ensuring they have the necessary academic qualifications and wider social skills to make the next step.

We know that students making the transition from Year 11 to the Sixth Form are ready to take full ownership of, and responsibility for, their own learning. Our job is to support them in this process, providing the expert guidance and support that will allow them to increase awareness of their strengths and areas for development. In doing so, we help our students reach their goals for both the present and the future.

Our Sixth Form curriculum is designed to be broad, balanced and flexible, meeting the needs of every student. Every student's individual goals, aspirations and understanding of how they best learn, together with their Key Stage 4 results, will guide which courses and pathways are best for them. Independent learning is vital for the success of every student in Sixth Form. At St Joseph's, our expectation is that every student will be fully

engaged with their chosen subjects. A passion for the study of these subjects should be the drive for our students to explore them thoroughly, using a range of resources, including new technologies, to grasp the opportunities before them.

At St Joseph's we know that success in exams alone does not prepare young people to move from Sixth Form into higher education, apprenticeships or employment. That is why we offer information, advice and guidance from careers advisors, with many opportunities to discover what a range of universities have to offer, and what they want from their applicants. We will arrange taster sessions and talks from university admission tutors, personnel managers and former students.

Every St Joseph's Sixth Form student has the opportunity to develop the skills and the sense of community that will help them become a leader, whether that be taking on the role of a senior prefect, supporting younger students in developing their reading, working with other year groups as a Teacher Aid, supporting charities or contributing to the school and local community. All members of our Sixth Form, are encouraged to act as a role model and inspiration for the wider school.

We are committed to providing a full range of extra-curricular opportunities, including cultural enrichment trips to Paris and Brussels, a 500 mile Cycling Pilgrimage across Northern Spain, and a wide range of sporting activities.



Our Curriculum

St. Joseph's has a flexible curriculum offer including courses that can be tailored to match our students' personal abilities, prior learning and choice of career. It is possible for a student to study a combination of AS/A Levels alongside vocational qualifications and, if necessary, some GCSEs. St Joseph's takes a holistic view of education through the mix of qualifications and extra activities.

LEVEL 3

The vast majority of our students study at Level 3. These courses comprise AS/A Levels and vocational equivalents such as BTEC Diplomas. Students with at least five C grades at GCSE are expected to pursue three/four AS subjects, in addition to the Advanced Welsh Baccalaureate Qualification.

Some Level 3 courses have particular entry requirements - as a general guide students should achieve an A*-C grade in the subjects they wish to study but it's suggested students contact the Sixth Form Team to discuss this.

Selecting the best possible courses is a key decision for Year 12 students to make, and it is often a challenging one. It is helpful for students to consider what they are really interested in, what is important to them, their career prospects and the courses available with the GCSE/Level 2 grades they have achieved. Students should also remember that the right combination of courses is important to make the most of the opportunities beyond Sixth Form. Students are encouraged to use university websites to research courses and their entry requirements.



LEVEL 2

St. Joseph's also offers students the opportunity to resit GCSE English and mathematics through taught sessions and access to dedicated study periods. It is important to note that many university courses and careers require at least a B grade in English and Mathematics.

THE ST. JOSEPH'S CORE

The St Joseph's Core is the combination of all qualifications that are studied by all students in the Sixth Form. All students in Year 12 and 13 study the Welsh Baccalaureate (Advanced Skills Challenge Certificate). The qualification is graded A*-E and is equivalent to an A-Level, worth up to 56 UCAS points. Students participate in four challenges over a two-year period including Enterprise, Global Citizenship and Community along with a mini-dissertation through the Individual Project. This qualification can build on skills already developed at GCSE level but also prepare students very effectively for university, apprenticeships and employment. The 'core' also brings together the extra and supra-curricular activities that the students take part in to make them stand out from others when applying for these future opportunities. It includes, as a Catholic school, the general RE element of Sixth Form life.

Fulfilling Potential



St Joseph's Sixth Form is part of a Catholic school, and as such our commitment to our faith is central to each decision that we make and everything that we do. We believe that our Sixth Form students play a fundamental role in building and sustaining our ethos as ambassadors of our school and local community.

We are committed to the provision of an inclusive and wide-ranging education for all our pupils in accordance with the teachings of the church. The learning experiences of our students are intended to embrace a comprehensive education: academic, social, moral and spiritual. Within the Sixth Form we are dedicated to developing as individuals to “become fully human in Christ” – to help our young people get the most out of their lives and to be the best that they can be.

Pastoral support is an area we pride ourselves on and the Sixth Form Tutor Team plays a crucial role in this aspect of our students' life. Tutors meet with their students once a day, either as individuals or as a tutor group, for a professional discussion, mentoring session or just a chat. The tutors will get to know each member of their tutor group extremely well and can help the students make the transition from GCSEs to the more independent world of post-16 education.

Students are monitored closely by their subject teachers who feed data and information directly to form tutors and Head of Sixth Form. The Assistant Headteacher responsible for the Sixth Form then provides teachers and students with bespoke intervention and improvement programmes to ensure that each student achieves their potential and beyond. Tutors are also a key element in the link between the school and home and will contact parents to update them on progress and any issues.

The Sixth Form Tutor Time Programme is diverse and evolves as the challenges that face our students change. Sessions can consist of classroom based activities and presentations by visiting speakers, alongside the core programme which includes: personal finance, CV writing, interview practice, careers planning, time management and the development of self-reflection skills.

Extra-curricular activities broaden the range of skills and qualifications, and give students the opportunity to meet and socialise. Within St. Joseph's Sixth Form each and every student has the opportunity to become involved in a wide variety of extra and super-curricular activities. These not only provide useful additions to personal statements and application forms but help develop our students as individuals.

All students are offered the opportunity to broaden their studies with specialist study visits and cultural trips to a variety of locations both within the UK and abroad, such as a Business Studies visit to Brussels and Paris, Geography field work in Mid-Wales, Politics and History visits to London and many more. Students also have the opportunity to take part in the bi-annual 500 mile cycling pilgrimage across Northern Spain to Santiago.



In 2023, over 40% of grades achieved by our students were A* or A.



UCAS and Careers Advice

We have a long and proud tradition of supporting our students in gaining access to further education or on to their chosen career pathway. In 2023, 100% of students were accepted at their first or second choice university, with 97% having achieved their first choice place.

Our experienced tutor team and Sixth Form management team work with students during every stage of the university application process. The daily contact with the form teacher means we can work with students closely to maximise their chances of success, from advice and support on choosing the right course and institution, to completing the personal statement. Visits to open days at local universities are also encouraged and supported, ensuring that students quickly get a feel for what kind of university they want to study at.

The Seren Network & Honours Programme

For those students considering applications to the Russell Group and Oxbridge universities, our partnership with the Seren Hub and own in-house Honours Programme opens up a range of experiences and support to enable this: visits from Oxbridge admissions tutors, tutorials on completing application forms and workshops to prepare for the interview stage.

We are proud to have sent many of our students to Russell Group universities along with having past students currently studying at both Oxford and Cambridge, and have high ambitions for our current and future students to continue this tradition.

The St Joseph's Honours Programme aims to enhance students' post sixth form aspirations and opportunities by providing a programme of additional study, range of extra and supra curricular activities, tailored destination support and fast track academic pathways. The programme this year current includes; fast track Advanced Skills Challenge Certificate completion, visits to Oxford and Bath universities, subject masterclasses and admissions test seminars and interview techniques.



Why Choose Us?

Rosie Morgan achieved three A* grades in French, English Language and the Advanced Skills Challenge Certificate and an A grade in Welsh (2nd Language). Rosie is now at the University of Oxford studying French and Linguistics.



Jessica Lloyd is at Aberystwyth University studying Childhood Studies after achieving two A grades in Health & Social Care and the Advanced Skills Challenge Certificate along with B grades in Sociology and English Language.

Olivia Lloyd is currently at the University of Bath studying Psychology after achieving five A-Level qualifications at St Joseph's. She achieved A grades in English Literature, Psychology and Sociology with a B grade in Chemistry and an A* grade in the Advanced Skills Challenge Certificate.

"St. Joseph's is great and I would not have achieved my grades if not for the teachers and the immense support provided by them during my studies."

Will McCarthy achieved an A* grade in the Advanced Skills Challenge Certificate, an A grade in Biology and B grades in Chemistry and Mathematics. He is now at the University of Exeter studying Medical Sciences.

Jessica Tomkins is now at Queen Mary University in London studying Mathematics after completing her A-Levels here following finishing Year 11 at Ysgol Cwm Brombil. She achieved an A* grade in Biology with A grades in Chemistry, Mathematics and the Advanced Skills Challenge Certificate.

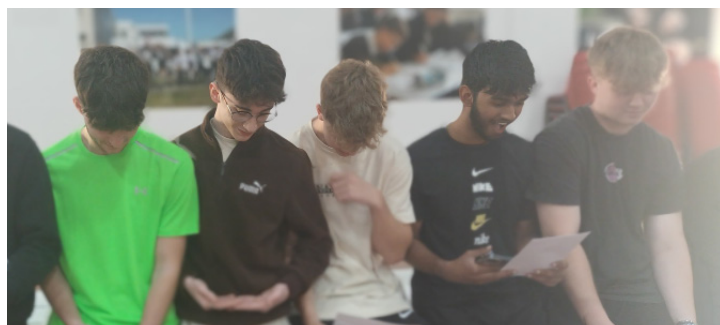
Kacey Sarich achieved A* grades in Law and the Advanced Skills Challenge Certificate, along with A grades in Psychology and Physical Education. She is now in Cardiff University studying a degree in Psychology.

Scott Sandbrook is now at Cardiff University studying Computer Science after achieving an A* grade in Business Studies, an A grade in Computing and a B in the Advanced Skills Challenge Certificate.

Eve Scourfield achieved an A* grade in History along with A grades in the Advanced Skills Challenge Certificate, Law and Psychology and is now at the University of Nottingham studying History.

"Going to Sixth Form is a decision I will never regret. The support I received alongside the opportunities to create lifelong friendships has made everything so worth it. I will be forever grateful for everything that Sixth Form gave me."

Millie Viazzani achieved 3 A* grades in Biology, Chemistry and the Advanced Skills Challenge Certificate and an A grade in French. Millie is now at Cardiff University studying Pharmacy.



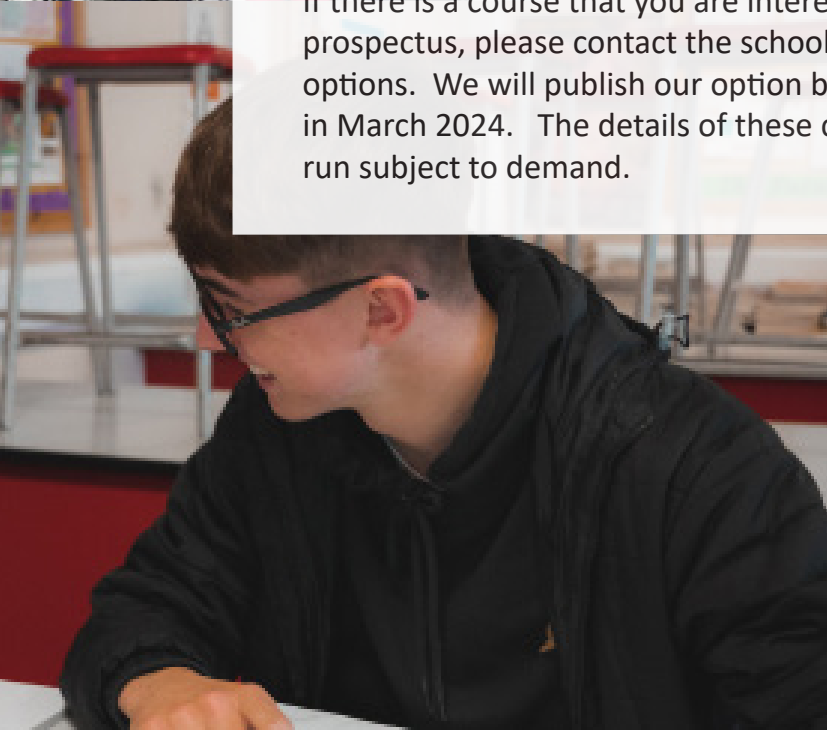


Choosing the Right Course For You

Choosing the right Sixth Form courses can be a daunting process. The most important thing is for students to choose courses that they enjoy and feel passionate about. The choice of courses will also be guided by GCSE results. Please do contact us to discuss the entry requirements for any of our courses.

We pride ourselves on supporting our students to make the right choices. During the application and enrolment process, we will talk to our students about their options, and about possible pathways through post-16 education and on to higher education, apprenticeships or the world of work.

The following pages outline our most popular courses and subjects we hope to offer next year. They are all Level 3 qualifications, either BTEC or GCE A Level. There are a range of other courses that may be available, either in school or in partnership with other institutions. If there is a course that you are interested in that is not listed in this prospectus, please contact the school so that we can discuss your options. We will publish our option blocks for September 2024 entry in March 2024. The details of these courses are provisional, and will run subject to demand.



Applied Science

Overview

The applied science sector is diverse and wide-ranging, including, for example, biomedical, forensic, physical and chemical sciences. There are approx. 5.8 million people employed in applied science occupations in the UK. This equates to approximately 20% of the workforce. The applied science sector has a crucial role to play in delivering economic growth in the UK and allowing companies to compete in a rapidly enlarging global market. A qualification in BTEC Applied Science level 3 shows that a student has developed essential knowledge and understanding of different areas of the subject.

Content and Assessment

Over the course of two years you will study three mandatory units:

- Principles and Application of Science I (completed in year twelve and assessed via an external exam)
- Practical Scientific Procedures and Techniques (completed in year twelve and assessed via an internal assignment)
- Science Investigation Skills. (completed in year thirteen and assessed via an external exam)

And in Year 13:

- physiology of human body systems
- biological molecules and metabolic pathways
- applications of inorganic chemistry
- electrical circuits and their application.

Progression routes

The applied science sector is diverse and wide – ranging, including, for example, biomedical, forensic, physical and chemical sciences. There are approx. 5.8 million people employed in applied science occupations in the UK. This equates to approximately 20% of the workforce. The applied science sector has a crucial role to play in delivering economic growth in the UK and allowing companies to compete in a rapidly enlarging global market.

Students can progress directly into work, apprenticeships or a wide range of science-based degree level courses including: Biomedical Science, Sports Therapy, Pharmaceutical Science, Paramedic Science, Radiography, Biological Life Sciences, Nursing, Veterinary Nursing and Applied Chemistry.

Art and Design

Overview

Learners start the course with a series of in-depth workshops exploring both 2D and 3D media. After the first term learners will then select a theme of their choice to develop a project for their Personal Creative Enquiry. The units explore visual recording, creative processes, contextual studies and materials, techniques and processes in Fine Art. As part of the course we participate in trips to Art galleries and local Universities, we also have an ongoing partnership with Swansea College of Art which has resulted in workshops and exhibitions being held at the University. We welcome pupils who have completed an alternative, yet similar GCSE qualification such as Product Design, Textiles or Graphic Design.

Assessment

During the two year course you will complete two coursework units and an externally assessed exam unit, very similar how GCSE is taught. All work is externally moderated after it has been marked by your teacher.

Qualification

Learners will achieve one A Level in Art and Design at the end of the course. Most learners will follow the Fine Art pathway within A Level Art but in exceptional circumstances some pupils have followed an alternative pathway within Art such as Textiles and Fashion.

Progression routes

The A Level Art specification directly supports progression to further and higher education in Art and Design and related subjects, as well as providing all students with a platform to inspire a lifelong interest in, and enjoyment of, Art and Design. Learners often enrol in a foundation art course which gives the opportunity to explore further specialisms within Art & Design before making an informed decision about the progression route within higher education. Art & Design Foundation diplomas are currently free to study in Wales and do not require tuition fees. For those learners wishing to pursue a creative pathway, in the last four years learners from St Joseph's have gone on to study Foundation Art & Design, Architecture, Fine Art, Design Crafts, Make-up for Performance, Fashion buying and marketing and Film studies at University.

Biology

Overview

Biology is the Science that deals with the living world. Biology is required for a number of courses such as Medicine, Veterinary Sciences, Dentistry, Biomedical Sciences, Forensics, Biochemistry, Pharmacology and Marine Biology. Students will require at least a B grade at GCSE. The AS course will extend the concepts taught at GCSE, which is why a firm footing is necessary. At AS, for example, we will study how efficient gaseous exchange is achieved in mammals and also organisms other than mammals for example in fish and in invertebrates such as earthworms and insects. You will carry out a range of experiments to support your learning such as dissection and examination of microscope slides.

Content and Assessment

In Unit 1 students will study Biochemistry beginning with biomolecules such as proteins, carbohydrates, lipids and DNA. You will extend your knowledge of cell structure in plants and animals as well as prokaryotes such as bacteria. Students will study the differences between bacteria and viruses (examination at end of Year 12).

In Unit 2 students will study the anatomy of physiology of living organisms at AS. For example, we will study how efficient gaseous exchange is achieved in organisms other than mammals for example in fish and in invertebrates such as earthworms and insects (examination at end of Year 12).

In Unit 3 students will study Energy and Ecosystems including key processes such as respiration and photosynthesis.

In Unit 4 students will study Inheritance and Evolution beginning with reproduction in plants and animals. They will revisit Mendelian inheritance, which was covered at GCSE, extending their ideas to include dihybrid inheritance, co-dominance, and gene linkage (examination at end of Year 13).

Progression routes

Biology is required for a number of courses such as Medicine, Veterinary Sciences, Dentistry, Biomedical Sciences, Biochemistry, Pharmacology, Environmental Sciences and Marine Biology.

Business Studies

Overview

Business Studies is a broad and wide-ranging qualification that will help you succeed in your future career no matter what you go on to do. The principles of business that you will learn underpin every organisation – from presenting a positive marketing image to developing effective presentation skills as well as operating inside the law and accurate accounting. Business Studies is a vocational qualification. This means that you will have the opportunity to study the theory of how businesses work by applying it to a real-life organisation.

Vocational qualifications, such as Business Studies are the equivalent to an AS and A-Level qualifications and can be studied alongside your other AS choices.

Content and Assessment

In Year 12 (AS) students will study:

- *Unit 1 – Exploring Business*; including how businesses make their money, their place in the economy, advertising techniques, introduction to accountancy and the difference between the corner shop and international supermarket
- *Unit 2 – Developing a Marketing Campaign*; including how businesses advertise themselves and their products

In Year 13 (A2) students will study:

- *Unit 3 – Personal and Business Finance*; including managing accounts, profit & loss, cash flow and balance sheets
- *Unit 4 – Recruitment and Selection Process*; including how businesses manage their staff, budget for them and employ

The course is assessed through a mixture of structured internal assignments and a written examination.

Progression Routes

Business and related subjects such as finance, accounting and management are among the most popular fields of study at universities worldwide. This course is designed to support learners who wish to study further education courses in areas such as Marketing, Business, Retail, Accounts, Finance, International Business, Business Management or Human Resource Management.

Chemistry

Overview

The WJEC A level in Chemistry provides a broad, coherent, satisfying and worthwhile course of study. It encourages learners to develop confidence in, and a positive attitude towards, chemistry and to recognise its importance in their own lives and to society.

Content

Unit 1: The Language of Chemistry, Structure of Matter and Simple Reactions

Unit 2: Energy, Rate and the Chemistry of Carbon Compounds

Unit 3: Physical and Inorganic Chemistry

Unit 4: Organic Chemistry and Analysis

This is a highly practical course and Unit 5 provides the opportunity to demonstrate your skills, knowledge and understanding acquired during the course, together with your ability to analyse and evaluate experimental data.

Assessment

At the end of each topic you will complete an end of topic assessment made up of past paper questions.

These assessments are given to ensure that students, teachers, parents and carers are continuously aware of the grade each student is working at.

You will sit 2 written exams at the end of year 12, each worth 20% of the A level qualification.

You will sit 2 written exams at the end of the year 13, each worth 25% of the A level qualification

You will also sit a practical exam in year 13, worth 10% of the A level qualification

Progression Routes

A-Level Chemistry opens the doors to many careers. As well as a practical knowledge of the subject, chemistry students develop many other skills prized by employers such as problem solving, numeracy, communication, creativity and data analysis. A-Level Chemistry is a recommended qualification for students wishing to study medicine or veterinary medicine at university.

Computer Science

Overview

Computer Science is a very logical subject where you will both study the theoretical content of how computers work and execute specific tasks, as well as learning to program in several different languages. A keen interest in solving problems by writing your own bespoke solutions is essential.

Content

Fundamentals of Computer Science; computer architecture, communication, data representation, data structures, software applications, programs, algorithms, logic, programming methodologies and the impact of computer science on society.

Programming and System Development; practical application of knowledge and understanding and will require the use of Visual Basic programming language. (40% written examination and on-screen assessment)

Programming and System Development; programs, data structures, algorithms, logic, programming methodologies and the impact of computer science on society

Computer Architecture; computer architecture, communication, data representation, organisation and structure of data, programs, algorithms and software applications.

Programme solution to a Problem; discuss, investigate, design, prototype, refine and implement, test and evaluate a computerised solution to a problem chosen by the candidate which must be solved using original code (programming). (60% written examinations and practical coursework)

Progression Routes

Coding is a boom sector within most sectors of business. This course leads to degrees in computing and links up with maths and physics courses.



English Language

Overview

AS and A Level English Language is designed to foster learners' independence as they explore English language in a variety of contexts. It provides learners with opportunities to develop a wide and deep knowledge of the systems of the English language and of issues relating to language and its uses. Throughout this course learners are presented with opportunities to develop their own creativity, both in the ways they think about language and in the ways they develop expertise in using language to communicate in different ways.

Content and Assessment

- Unit 1 Exploring Language (Written examination)
- Unit 2 Language Issues and Original and Critical Writing (Written examination)
- Unit 3 Language over Time (Written examination)
- Unit 4 Spoken Language and Creative Re-casting (Written examination)
- Unit 5 Language and Identity (Non-examination assessment: 2500-3500 words)

There are two units of study in the first year. Assessment is carried out through two formal examinations, focused on your analysis of written and spoken language, and your ability to write for a specific purpose and audience. In the second year, there are a further two examination units, together with a coursework unit.

Progression Routes

Pupils who have studied English at A-Level have followed a range of further study and career paths, including the following: English Literature and English Language undergraduate and postgraduate courses, journalism, law, advertising, theatre, television, radio, teaching, accounting, business management, civil service, media and psychology.

English Literature

Overview

English Literature A-level is definitely the course for you if you have a genuine passion for reading and engaging with texts written by some of the best creative minds of the literary world. This enriching and exciting course provides you with an introduction to the discipline of advanced literary studies and presents opportunities for reading widely and for making creative and informed responses to each of the major literary genres of poetry, prose and drama. You will develop historical knowledge and cultural understanding of the eras and countries of the texts' settings, and explore interpretations of language. Class discussion is lively and enjoyable and you will be studying, in some detail, the language and style of a range of interesting texts, as well as the contextual factors which shaped the writing of them.

Content and Assessment

- AS Unit 1 Prose and Drama (closed-book) - Exam
- AS Unit 2 Poetry Post-1900 (open-book, clean copy) - Exam
- A2 Unit 3 Poetry pre-1900 and Unseen Poetry (open-book, clean copy) - Exam
- A2 Unit 4 Shakespeare (closed-book) - Exam
- A2 Unit 5 Prose Study (Non-exam assessment - internally assessed and externally moderated essay 2500-3500 words)

Progression Routes

The study of English Literature is extremely rewarding and opens up many doors for students who dedicate the effort required to succeed in this subject. The nature of this subject ensures that both oral and written communication skills are developed and enhanced. Therefore, English is a subject that would benefit students in a great number of university courses and careers. In the publication *Informed Choices*, produced by the Russell group of leading UK universities, English Literature is described as a "facilitating subject". Many students of English Literature pursue careers in teaching, journalism and the media, law and politics.



Geography

Overview

Geography helps us to understand the planet's movement, patterns, changes and systems. An understanding of Geography is key to solving some of the major issues we face today including climate change, migration and tectonic hazards. Geography encourages learners to apply knowledge, theory and skills to the world and this will enable learners to develop a critical understanding of the world's people, places and environments.

Assessment and Content

Year 12 – Unit 1 and Unit 2

- Unit 1 – 1.1 – Glaciated Landscapes
- Unit 1 – 1.3 – Tectonic Landscapes
- Unit 2 – 2.1 – Changing Places

Year 13 - Unit 3 and Unit 4

- Unit 3 – 3.1 Global Systems and Global Governance
- Unit 4 – Development in Africa

Progression Routes

Geography is a versatile and dynamic subject that can open up doors to a range of different careers and further education subjects. As well as going to study Geography at University, other disciplines can be considered including Engineering, Environmental Studies, Oceanography and Law. Subsequent careers can include Teaching, Environmental Law, Civil Engineering, Armed Forces or City Planning amongst many others.

Health and Social Care

Overview

Choosing to study for one of our Health and Social Care qualification is a great decision to make for lots of reasons. At the same time you are gaining many transferable skills. Working in health and social care professions can also take you to different parts of the country and overseas. The opportunities are endless.

At St. Joseph's we offer both the single and the double award versions of the qualification. The diploma (double award) includes a significant amount of work placement in a chosen field.

Health and Social Care is a vocational or work-related qualification. This means that students will have the opportunity to gain specific knowledge, understanding and skills that are relevant to their chosen subject or area of work.

Content and Assessment

Students will study:

- Developing Effective Communication
- Equality, Diversity and Rights
- Development through the Life Stages
- Caring for Children and Young People
- Health, Safety and Security
- Sociological and Psychological Perspectives

Assessment is by a mix of written examination and internal assignment completed in class.

Progression Routes

The health and social care sector employs some of the most talented and brilliant people the country has to offer. The NHS as the main employer, has continual need for doctors, nurses, ambulance staff and support staff and there are further opportunities to work for the NHS in social care in hospitals, educational settings and residential homes. Job opportunities are endless. A firm understanding of health and social care would be advantageous to all future employers. A number of former students have continued their health and social care studies at universities all over the country with a mixture of internally assessed units and a written exam.



History

Overview and Content

'The past is never dead. It's not even past.' The words of William Faulkner sum up the importance of the study of History. How it resonates with the present and is a part of everything we do. Therefore, studying History is fundamentally important and incredibly enjoyable. WJEC A Level History aims to develop interest and enthusiasm for History, and to develop an understanding about its intrinsic value and significance. Moreover, it aims to imbue students with an understanding of different identities within society, and an appreciation for social, cultural, ethnic, and religious diversity.

The AS course covers:

- Government, Rebellion and Society in Wales and England c. 1485-1603
- Religious Reformation in Europe c.1500 – 1564 & The Outbreak of the Reformation in Germany c.1500 – 1531

The A2 course covers:

- The American Century 1880-1980
- A coursework module: The European Reformation 1530-1560

Assessment

- In Year 12 there are 2 written examinations
- In Year 13 there are 2 written examinations and a coursework module

Progression Routes

Students will be able to go into a variety of professions including Teaching, Law, Print Journalism, Broadcast Journalism, Politician, Archaeologist, Museum Manager or Curator, Archivist, Academic Librarian, Civil Service, Heritage Manager, Historic Buildings and Conversation Manager.

Lawyer - £55K

Broadcast Journalist - £55K

Archaeologist - £40K

Politician (MP) - £80K

Mathematics

Overview

Mathematics is practical and beautiful. It is not just about finding answers but learning to ask the right questions. It is not just about mindlessly crunching numbers but forming new ways to see problems so that we solve them by combining insight with imagination. Mathematics helps us to perceive realities that are otherwise tangible to us. Mathematics is a sense for patterns, relationships, and logical connections, Mathematics is a whole new way to see the world! This A Level allows you to learn about multiple areas of Mathematics including Pure, Statistics and Mechanics.

Assessment and Content (AS)

Unit 1 Pure Mathematics A (25% of the qualification 120 marks)

Proof, Algebra and Functions, Co-ordinate Geometry, Sequences and Series, Trigonometry, Exponentials and Logarithms, Differentiation, Integration, Vectors

Unit 2 Applied Mathematics A (15% of the qualification) consists of two sections. Section A Statistics (40 marks) and Section B Mechanics (35 marks).

Kinematics and Forces and Motion, Newton's Laws, Forces in context, Vectors, Probability, Hypothesis testing, Binomial Distribution, Poisson Distribution, Data Presentation, and Interpretation.

Progression Routes

A-level Mathematics is one of the most widely accepted and respected subject choices by universities and is likely to enhance your options rather than close them down. Mathematics is a "facilitating" subject. This means that it is among a list of A-level subjects which are asked for most frequently by universities, it will also assist you when applying for higher apprenticeships and jobs. Mathematics gives you the tools to work in a vast number of fields: medicine, dentistry, computer science and software development, statistics, actuary and engineering.



Further Mathematics

Overview and Content

Mathematics is, inherently, a sequential subject. There is a progression of material through all levels at which the subject is studied. The specification content therefore builds on the skills, knowledge and understanding set out in the whole GCSE subject content for Mathematics and Mathematics-Numeracy. It also builds upon the skills, knowledge and understanding in AS and A Level Mathematics. Further Mathematics is for those who are taking A-Level Mathematics and who achieve at least an A Grade at Higher tier Mathematics GCSE.

The AS course covers:

- **Pure:** Complex Numbers, Argand Diagrams, Matrices and Vectors.
- **Statistics:** Random Variables, Poisson, Statistical Tests including Spearman's and Chi Squared Distribution
- **Mechanics:** Hooke's Law, Momentum and Circular Motion.

Assessment

Unit 1: Pure Further Mathematics A (13.5% of the qualification 70 marks)

Unit 2: Further Statistics A (13.5% of the qualification 70 marks)

Unit 3: Further Mechanics A (13.5% of the qualification 70 marks)

Assessments consist of written examinations, comprising of short and long, both structured and unstructured questions.

All examinations are 1 hour and 30 minutes long.

Drama/Performing Arts

Overview

Drama and Theatre are part of an exciting and inspiring course which prepares you for both higher education and the world of work, enabling you to succeed in whatever future career you strive to achieve. Universities, as well as employers, actively search for a practical subject like performing as it demonstrates personal attributes that top-universities look for in their applicants. The highly practical specification provides learners with the opportunity to work as either performers and/or designers on three different performances. The course provides learners with three texts to explore and engage with from an exciting and diverse list. Learners will also be given the opportunity to watch at least two live theatre productions in theatres across the UK, engaging with various styles of theatre, and learning the processes and practices involved in the arts. The subject is perfect for those who see themselves on the stage or behind the scenes, with options to complete the course from a technical aspect.

Assessment and Content - Year 12

Unit 1 = Theatre Workshop (24% of qualification)

Learners will be required to create a piece of theatre based on an extract from a text. The techniques and working methods of either an influential theatre practitioner or theatre company will be used.

Unit 2 = Text in Theatre (16% of qualification)

Learners will be required to study one text, demonstrating their knowledge and understanding of interpreting a text to complete a written examination. Learners will also evaluate a live theatre performance for this exam.

Progression Routes

Drama is not just for future movie stars and actors. Drama is for future business leaders, educators and scientists too. Throughout the course, you will build transferable skills to allow you to study any degree at university. Of course, following this course you can go on to study acting, musical theatre, production, or theatre design even further at degree level or as a career.



Law

Overview

Law encompasses nearly everything we do from birth, employment, families, medicine, crime and even something as simple as buying a bus ticket. To study Law is to study life itself. This means that on this course we will be looking at not only how our justice system works but you will also study two substantive areas of law, namely Human Rights and Criminal. You will learn what it means to represent a defendant on a charge of murder, the difference between theft and robbery, how to sue a newspaper when they ruin your client's reputation and the powers of the police to arrest, detain and charge you with an offence.

Content and Assessment

Year 12 - AS Unit 1: The Nature of Law and the Welsh and English Legal Systems (Written examination)

Year 12 - AS Unit 2: The Law of Tort (Written examination)

Year 13 - A2 Unit 3: The Practice of Substantive Law (Written examination)

Year 13 - A2 Unit 4: Substantive Law Perspectives (Written examination)

Progression Routes

The most common career progression is into the legal profession itself working as a solicitor or barrister, however, there are a range of legal roles that exist such as legal executives and paralegals. Those who go on to pursue a Law degree do not necessarily then train to become a lawyer and many choose a Law degree to gain the sought-after skills desired by employers, which allows them to enter the worlds of teaching, journalism, policing, banking, management, and insurance.

Barrister - £50-£200k

Solicitor £27-£100k

Detective £25-91k

Lecturer £33-100k

French

Overview

The AS Level / A Level French course will allow you to develop your French language skills to a higher level. You will develop confident, effective communication skills in French and a thorough understanding of the society, culture and history of France and countries and communities where French is spoken. The ability to understand and communicate in another language is a lifelong skill for education, employment and leisure purposes. It enables you to discover new cultures and develop your understanding of the world. In today's business market employers look favourably upon prospective employees who can offer a foreign language. Even if you are not planning to study languages, many universities appreciate the importance of a modern language qualification as they recognise that the skills that you develop are applicable across many disciplines. This course will give you the confidence to use your language skills in any career and open up the door to possibilities of further study or employment not only in France but globally.

Assessment and Content

Unit 1 (AS): Speaking: 12-15 minutes (plus additional 15 minutes preparation time)

Unit 2 (AS): Listening, reading, translation and critical response in writing . Written examination : 1 hour Unit 4 (A level): Speaking : 11-12 minutes

Unit 5 (A Level): Listening, reading and translation. Written examination : 1 hour 45

Unit 6 (A Level): Critical and analytical response in writing (closed-book) Written examination : 1 hour 30

Progression Routes

An A-level language complements a whole variety of subjects. You may need languages for all sorts of career destinations- doctors, psychologists and physiotherapists need language skills to communicate effectively with patients whether they work in the UK or overseas; businessmen, bankers and entrepreneurs all need language skills to make deals and sell products on the global market. Politicians, historians, geographers and holiday reps all need language skills to get to know the people and area that they are passionate about. A foreign language A-Level will complement and enhance your other studies to no end.

Sales Manager - £60K / Copywriter - £50K / French Speaking Nanny (London) £43 - £50K / Account Manager - £20K

Physical Education

Overview

This course is designed for students who are interested in exercise and sport in terms of human anatomy, health and achievement. It is also about improving the individual's personal skills and performance(s) in a range of sports/exercises, which will then allow them to also lead others in developing their personal skills and performance in sports/exercises. This A-level offers a multidisciplinary approach to the study of and participation in sport, play, leisure and recreation, allowing you to study movement, performance and behaviour in relation to PE.

Content and Assessment

Assessment is in the form of coursework, practical moderation and a written examination covering topics such as exploring physical education, improving personal performance and then at A2 evaluating and refining.

Progression Routes

A-level PE can take students on to a range of degrees and careers in sport and recreation as well as a variety of careers including:

- Sports Management & Teaching
- Medicine
- Physiotherapy
- Business & Finance.

Former students of this subject have gone on to study at some of the UK's top universities where they have attended exciting and challenging degree programmes such as PE Teacher, Sport Psychology, Sports Management and Coaching, Biomedical Sciences, and Primary and Secondary Education with QTS to name but a few.

Physics

Overview and Content

This exciting A-Level builds on the Physics GCSE course, extending this to a more detailed understanding of Physics and the ways in which it governs the world around us. In Year 12 students will complete modules entitled "Motion, Energy and Matter" and "Electricity and Light". Moving into A level, students will do modules entitled "Oscillation and Nuclei" and "Fields and Options" (there is some scope of choice with the options available). Throughout all of the modules, students will carry out specified practical work in preparation for the practical examination in Year 13 .

Assessment

Year 12: two external exams (40% of the qualification)

Year 13: two external exams (50% of the qualification) and a practical assessment (10% of the qualification)

Progression Routes

Physics is considered a very good A level to have by both employers and higher educational establishments. As well as going on to study Physics at university, students can consider many other disciplines including cosmology, medicine, engineering, construction and architecture. A physics degree is a great starting point for a career in scientific research, as well as in a range of careers in the business, finance, IT and engineering sectors.

Data Scientist, £25,000

Geophysicist, £28,000

Research Scientist, £38,000

Astronomer, £45,000



stjosephscomp



@stjosephscomp



@stjosephscomp

Psychology

Overview

Why do people behave in the way they do? Psychology is the scientific study of the relationships between the mind, the brain and behaviour. There are many different fields within Psychology, all with one goal: understanding human behaviour. At AS level, students will study the five approaches to Psychology and their assumptions, therapies and research. These are the biological approach, the psychodynamic approach, the behaviourist approach, the cognitive approach, and the positive approach. At A2, students will investigate behaviours such as addiction, criminal behaviour, stress and schizophrenia. They will also carry out two personal investigations. Psychology is enjoyable, interesting, and focuses on many essential skills such as essay-writing, numeracy, and planning research.

Assessment

Year 12 Unit 1 – Psychology: Past to Present

Year 12 Unit 2 – Psychology: Using Psychological Concepts

Year 13 Unit 3 – Psychology: Implications in the Real World

Year 13 Unit 4 – Applied Research Methods



Progression Routes

Psychology is an extremely valuable subject for many employment areas. Most careers involve working with people, therefore knowledge of how people work can be applicable to a range of occupations. An A level in Psychology is an ideal foundation for a degree in the subject, which can lead to a career as a Psychologist in areas such as health, education, sport, forensics, and many more. Other careers related to Psychology are teaching, nursing, the police force, management, and any career involving working with people.

Forensic Psychologist - £43k

Trainee Educational Psychologist - £24- £32k

HR Manager - £40k

Public Services

Overview and Content

This course is designed to allow learners to develop their skills and knowledge in discipline, teamwork and communication, areas essential in the sector as well as opportunities to learn about sector-related criminology and professional development with the uniformed protective services. The uniformed protective services sector is diverse and encompasses uniformed public services such as the police service, the fire and rescue service, the armed services and the prison service.

Students will study:

Unit 2: Behaviour and Discipline in the Uniformed Protective Services

Unit 5: Teamwork, Leadership and Communication in the Uniformed Protective Services

Unit 10: Skills for Outdoor Activities and the Uniformed Protective Services

Unit 13: Introduction to Criminology

Assessment

The course is assessed through the completion of structured assignments throughout the course and a written examination

Progression Routes

Progression from Level 3 Public Services could include any uniformed or non-uniformed public service including employment in roles in the emergency services, Navy, RAF, Army, fire and rescue service, police service, prison service, probation service, criminal justice agencies and victim support agencies.

Air Ambulance - £36,000

Army Officer - £20,000

Firefighter - £21,000

Police - £25,000

Paramedic £36,000

Theology, Philosophy and Ethics

Overview

Theology, Philosophy and Ethics is a broad and wide-ranging qualification that will help you to see the world from different perspectives, and to gain a deeper understanding of what it means to be human. You will examine, analyse and evaluate how belief or lack of belief may influence human behaviour, how we make moral choices, and how different societies and historical periods have dealt with questions about the meaning of life. The course has three components: Christian Theology, Philosophy and Ethics. You will develop critical and analytical skills that you will transfer to a range of different career paths such as law and politics, journalism, education, advertising, health care, social and public services and teaching.

Content and Assessment

Unit 1: An Introduction to Christianity

Unit 2: An Introduction to Religion and Ethics and the Philosophy of Religion

Unit 3: A Study of Christianity

Unit 4: Religion and Ethics

Unit 5: Philosophy of Religion

Essays completed in class and as homework in preparation for the external examinations will be moderated internally and externally. Students will be given extensive feedback throughout the course in order to facilitate progress.

Progression Routes

This qualification significantly complements other AS/A Level qualifications that you may study by providing you with the essential tools to be a critical thinker in any field, i.e. Law, Psychology, Academia, Teaching, Social Work, Medicine and Health Sciences, Scientific Research, Journalism, Art and many others. The subject offers an unparalleled opportunity to develop the breadth and depth of critical and analytical skills sought after by employers.

Sociology

Overview

If you are fascinated by the behaviour of others and why we act the way we do, then sociology is for you! This course is designed to introduce students to our changing society through the exploration of topics including family, education, crime, inequality and key sociological perspectives including Functionalism, Marxism, Postmodernism, Feminism and the New Right along with the methods used when conducting sociological research. Sociology is the study of society and therefore develops problem solving abilities and sharp, critical thinking. Sociology will teach you how to find information, analyse statistics, extract what is important and then turn it into a compelling argument. Students will also have the opportunity to hear first-hand about research conducted by contemporary sociological researchers at Welsh Universities.

Content and Assessment

Year 12 : Unit 1 – Acquiring Culture *including cultural transmission, socialisation and the acquisition of identity, family and households*

Year 12: Unit 2 – Understanding Society and Methods of Sociological Enquiry *including sociological enquiry, education and data*

Year 13: Unit 3 – Power and Control *including crime and deviance*

Year 13: Unit 4 – Social Inequality and Applied Methods of Sociological Enquiry *including social inequality, applied methods of sociological enquiry, social differentiation and stratification.*

Progression Routes

Sociology relates to many areas of employment. Understanding social behaviour can be valuable in many careers. Some popular options include social work, youth work, support work, research, and many more. An A Level in Sociology is the ideal starting point for a degree in Sociology, which can lead to careers in areas such as the NHS, the government, education, and more. Sociology combines well with other Humanities subjects such as English, History, Politics and Law. It also combines well with other social sciences such as Psychology.

Civil Servant - £29k

Member of Parliament- £80k

Social Worker - £35k

Probation Officer - £29- £37k



stjosephscomp



@stjosephscomp



@stjosephscomp

Welsh (Second Language)

Overview

The AS and A Level in Welsh Second Language encourages learners to study Welsh with interest, enjoyment and enthusiasm. The course aims to encourage students to communicate confidently, accurately and fluently both orally and in writing in a wide range of situations and contexts. There will be opportunities to critically analyse material and give a personal response to familiar and unfamiliar texts. Students will be encouraged to look at Welsh media such as Radio Cymru, S4C and accessing Welsh language websites.

There has never been a more exciting time to learn Welsh with the Welsh Government setting out a strategy of 1 million Welsh speakers by the year 2050.

Assessment and Content

- Unit 1 - Group oral exam discussing the film 'Patagonia' and the topic chosen for the personal project.
- Unit 2 - Personal Project on a topic of choice relating to Wales or Welsh culture.
- Unit 3 - Written exam on the use of language and poetry. Candidates will study the Welsh grammar and study five set poems.
- Unit 4 - Group oral exam discussing contemporary multimedia Welsh culture and the play 'Crash' by Saunders Lewis.
- Unit 5 - Written exam discussing the Welsh language in society and provide a written response in Welsh to an English article.
- Unit 6 - Written exam based on one of the four short stories studied and Welsh grammar.

Progression Routes

There has never been a more exciting time to learn Welsh. Many careers now desire or require a working use of Welsh and this course aims to provide the necessary levels of proficiency and fluency. Many careers now desire or require a working use of Welsh and this course aims to provide the necessary levels of proficiency and fluency.

Translator – 27k

Nursery Manager – 32k

Communications & Media Officer - 31k

Product Design (Art Pathway)

Overview

This course will allow students to specialise in Product and 3D Design as part of a design pathway. Students will be introduced to a variety of experiences that explore a range of three-dimensional media, processes and techniques. They will be made aware of both traditional and new media and have the opportunity to work within:

- exhibition design
- production design
- interior design
- product design
- environmental design
- architectural design

Assessment and Content

Students spend the first half of Year 12 developing your existing skills and building on techniques and knowledge gained at GCSE. We'll also challenge you to acquire new skills, work through a design process that covers criteria and analyse current designs around the world. At the end of this experimental period, you'll have gained sufficient knowledge and ability to work on your own Personal Project. This unit of work is based on a working brief/starting point and you'll be required to produce a good quality body of work displayed on design sheets as well as articulating your own ideas/concepts into a product.

The course is assessed entirely by the completion of a portfolio of work and coursework.

How to Apply

We would love to show you more of what we have to offer at St. Joseph's Catholic School and Sixth Form Centre. If you would like to find out more, or submit an application to join our Sixth Form, please follow the instructions below.

1 APPLY

To fill in an online application, begin by visiting www.stjosephscomp.co.uk and viewing the subjects on offer, video podcasts, information about the Sixth Form and then complete an online application form. You will be asked to give a first indication of your subject choices at this stage and can use the current option blocks and prospectus subject pages to help.

2 OFFER

Once you have made your application you will receive an e-mail offer from admissions staff to confirm your application has been received and make a conditional offer. This offer will be conditional upon achieving the GCSE or equivalent grades which meet our entry criteria.

3 TASTER SESSIONS

Usually in May, June and July, the school arranges taster sessions in order for students to experience their chosen courses at Level 3 before they commit to them. This also gives students the opportunity to try courses they maybe be interested in but may not have experienced at GCSE.

4 ENROLMENT

Enrolment will take place shortly after GCSE results are released. We will contact students with details of your enrolment date. This is the opportunity to confirm your place and subject choices before starting in Year 12 in September. In the meantime, there is starting information about the dress code, timetable and available facilities available on the website.

"I wasn't sure what to expect when I joined St. Joseph's in Year 12, but the experience has been fantastic. I have quickly been made to feel welcome, and the support I have had from my teachers has been inspiring. The social events have quickly helped me to feel a part of the Sixth Form, and I've made friends that will last a lifetime!"

Kirsty, Year 13

Both my children have succeeded at St Joseph's and continued on to university. Nothing was ever too much trouble or effort and I felt the wellbeing of the student came above all else.

Parent of a former pupil from Ysgol Bae Baglan

The Sixth Form has been a great experience for me. After being at St Joseph's since Year 7 the natural step was the Sixth Form and I'm so glad I did! The teachers are knowledgeable, patient and I've made some friends for life!

James, former pupil of St Joseph's

St Joseph's gave me another chance! Having had a negative experience in Year 12 somewhere else further afield, St Joseph's provided me with hope for the future and my dreams became realistic again. I went from EEU at AS Level elsewhere to AAB at AS Level at St. Joseph's.



St. Joseph's Catholic School and Sixth Form Centre

Newton Avenue
Port Talbot
SA12 6EY

www.stjosephscomp.co.uk

Email: stjoescomp@hwbmail.net | **Tel:** 01639 884305

Twitter: @stjosephscomp | **Instagram:** @stjosephscomp | **Facebook:** stjosephscomp
Headteacher: John Felton